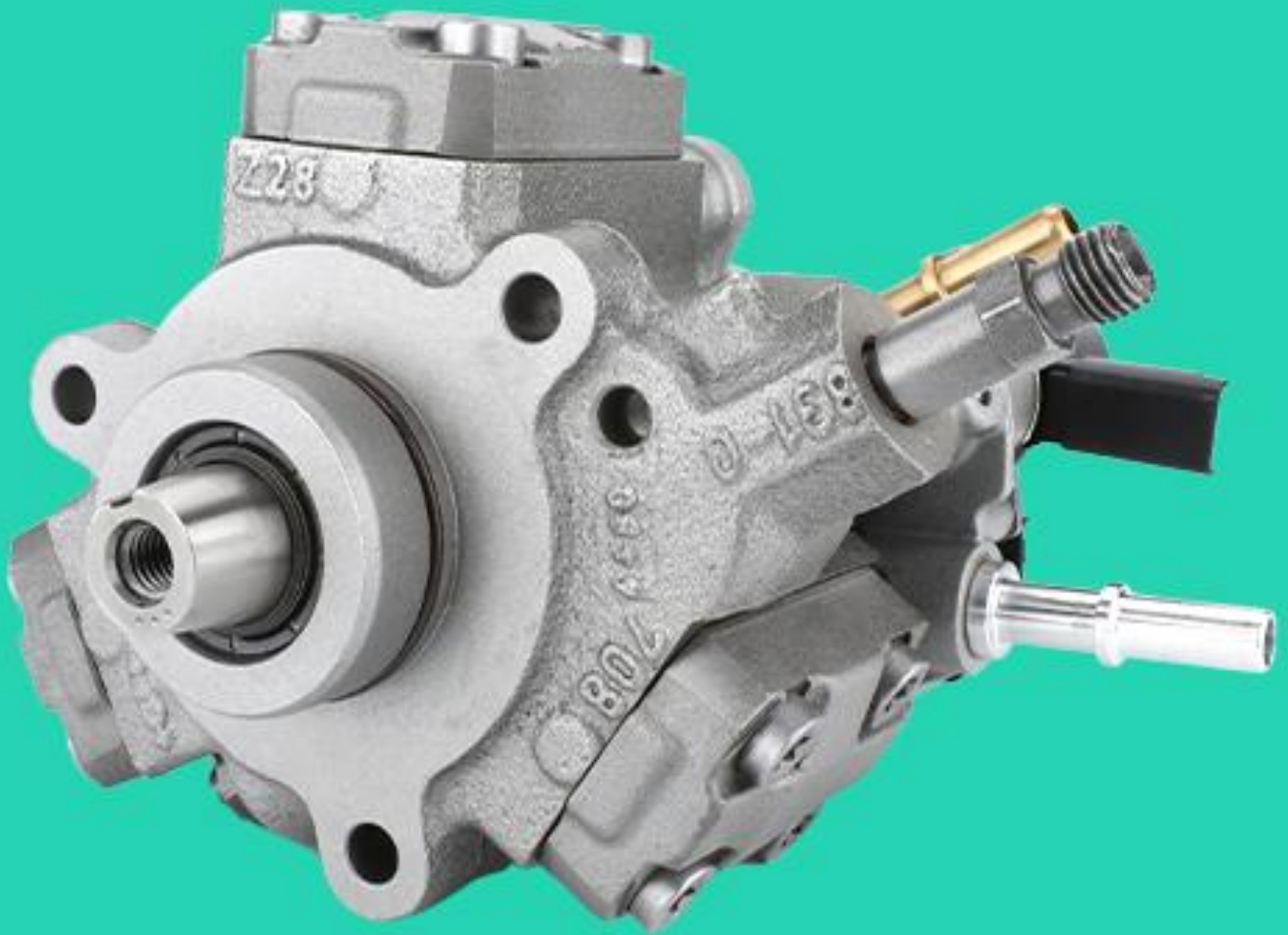


**A2C0003282** CRDI Injection Pump **CR** Series Technical File

SKU: Z1Y3A2C0003282



# CRDI

## INJECTION PUMP

## A2C0003282 CRDI Injection Pump CR Series Technical File

### Content

1. A2C0003282 CRDI Injection Pump Introduction .....	2
1.1. A2C0003282 CRDI Injection Pump Basic Information .....	2
1.2. A2C0003282 CRDI Injection Pump Common Part Number .....	2
1.3. A2C0003282 CRDI Injection Pump Parameters .....	2
1.4. A2C0003282 CRDI Injection Pump Specifications And Dimensions .....	2
1.5. A2C0003282 CRDI Injection Pump Quality Control .....	2
1.6. A2C0003282 CRDI Injection Pump Customization Service .....	3
1.7. A2C0003282 CRDI Injection Pump Packaging List And Packaging Dimensions .....	3
1.8. A2C0003282 CRDI Injection Pump Testing Standards and Certificates .....	5
1.9. A2C0003282 CRDI Injection Pump Warranty Instructions .....	6
1.10. A2C0003282 CRDI Injection Pump Manufacturer .....	7
2. A2C0003282 CRDI Injection Pump Technical Support.....	7
2.1. A2C0003282 CRDI Injection Pump Utilized Location.....	7
2.2. A2C0003282 CRDI Injection Pump Installation.....	8
2.3. Reasons of A2C0003282 CRDI Injection Pump Not Working Normally.....	9
2.4. Causes of A2C0003282 CRDI Injection Pump Being Damaged .....	9
2.5. A2C0003282 CRDI Injection Pump Storage Standards .....	10
2.6. A2C0003282 CRDI Injection Pump Technical Support Obtaining Methods.....	10
3. A2C0003282 CRDI Injection Pump Purchase And Delivery .....	11
3.1. A2C0003282 CRDI Injection Pump Purchase And Payment Term .....	11
3.2. A2C0003282 CRDI Injection Pump Main Sales Markets .....	11
3.3. A2C0003282 CRDI Injection Pump Declaration Requirements .....	11
3.4. A2C0003282 CRDI Injection Pump Shipping Ways .....	11
3.5. A2C0003282 CRDI Injection Pump Delivery Time .....	11
3.6. A2C0003282 CRDI Injection Pump Logistics Time for Destination Out of China's Areas .....	11
3.7. A2C0003282 CRDI Injection Pump Shipping Package.....	12
4. Company Information.....	13
4.1. Company Introduction.....	13
4.2. Contact Information .....	14
5. Copyright Statement.....	14

## A2C0003282 CRDI Injection Pump CR Series Technical File

### 1. A2C0003282 CRDI Injection Pump Introduction

#### 1.1. A2C0003282 CRDI Injection Pump Basic Information

Title	A2C0003282 CRDI Injection Pump CR Series	Quality
SKU	Z1Y3A2C0003282	Re-manufactured

#### 1.2. A2C0003282 CRDI Injection Pump Common Part Number

##### (1) CRDI Injection Pump Exchange Information

CRDI Injection Pump Part Number	Car Model	Compatible Number	OE Number
A2C0003282	LAND	5WS40273	7H2Q-98395-CE

##### (2) CRDI Injection Pump Application Information

Vehicle Brand	Car Model	Engine Model	Production Date	Power (KW)	Horse Power	Emission (L)	Cylinder	Power Source (V)
LAND	For Ford	TD	2011	140KW	/	2.7L	/	/

##### (3) CRDI Injection Pump's Common Writing Methods

A2C0003282, 5WS40273, 7H2Q-98395-CE

#### 1.3. A2C0003282 CRDI Injection Pump Parameters

Adaptation System: Common Rail System

CRDI Injection Pump Series: CR Series

CRDI Injection Pump Type: High Pressure Pump, CR System

#### 1.4. A2C0003282 CRDI Injection Pump Specifications And Dimensions

CRDI Injection Pump Size: 29cm\* 21cm \*25 cm

Gross Weight: 6.4kg

Package Weight: 6.9kg

CRDI Injection Pump Quality: Re-manufactured

Package Size: 32cm\*24cm \*27 cm

CRDI Injection Pump Type: High Pressure CRDI Injection Pump

MOQ: 1 piece

#### 1.5. A2C0003282 CRDI Injection Pump Quality Control

##### (1) CRDI Injection Pump Testing

All parts of the CRDI injection pump have undergone electrical characteristics testing, precision testing, high temperature testing, low temperature testing, withstand pressure testing, leakage testing, durability

testing, and various working conditions testing.

## (2) CRDI Injection Pump Installation



In addition, the CRDI injection pump production and installation process is quality controlled. Our company strictly follows the standard product installation data and product installation steps for installation, such as CRDI injection pump stroke test, CRDI injection pump tightening torque, CRDI injection pump tightening torque.

## (3) CRDI Injection Pump Inspection

The factory inspection of the CRDI injection pump has undergone three inspections: full inspection, random inspection, and batch inspection. Different brands of test benches are used to test the same CRDI injection pump for a total of no less than three times for factory inspection, and the injection pump installation testing environment are progressed in dust-free workshop.

### 1.6. A2C0003282 CRDI Injection Pump Customization Service

**(1) CRDI Injection Pump Customization Service Coverage:** Meet OEM manufacturers' customization needs for shell engraving, logo engraving, CRDI injection pump internal packaging, CRDI injection pump external packaging and labels, etc.

NO.	1	2
Picture		
Name	CRDI Injection Pump Shell Engraving	CRDI Injection Pump Packaging

## (2) CRDI Injection Pump Customization Service Requirements:

The purchase of customized CRDI injection pump is no less than **10** pieces.



The purchase of customized CRDI injection pump boxes is no less than **1000** pieces.



⚠ **Customized products involve the need of specify logo, the OEM manufacturer needs to provide trademark authorization and the sample of logo image file.**

⚠ **Once the customized CRDI injection pump is sold, it can't be returned or exchanged if there is no quality problems.**

### 1.7. A2C0003282 CRDI Injection Pump Packaging List And Packaging Dimensions

#### (1) CRDI Injection Pump Parts List

NO.	1	2	3
Picture			

Name	CRDI Injection Pump Assembly	Blue Anti-Rust Bag	Lining
Description	CRDI injection pump part number: A2C0003282	Prevent CRDI injection pump from rusting	Prevent the CRDI injection pump from being damaged by external forces
NO.	4	5	6
Picture			/
Name	CRDI Injection Pump Packaging Box	CRDI Injection Pump Protective Cover	/
Description	Place the injection pump and accessories	Protect the CRDI injection pump hole from contamination and blockage	/

⚠ Minors are prohibited from using the CRDI injection pump assembly, O-ring, Oil inlet protective cover, CRDI injection pump shell protective cover, oil return protective cover, VCI anti-rust bag, and bubble bag to avoid personal injury.

⚠ O-rings and repair kits are one-time installation accessories and need to be replaced when installed again.

⚠ Oil inlet protective cover, CRDI injection pump shell protective cover, and oil return protective cover are recyclable accessories and can be reused.

⚠ VCI anti-rust bags and bubble bags are non-degradable materials, please dispose of them properly after using.

⚠ The CRDI injection pump and the installation part duct must be treated with appropriate sealing oil during installation.

## (2) CRDI Injection Pump Packaging Box Size



Pic No.1

NO.	Name	CRDI Injection Pump Packaging Size (Cm)
1	CRDI Injection Pump packaging box	32*24*27

#### 1.8. **A2C0003282** CRDI Injection Pump Testing Standards and Certificates

Shumatt can provide the factory quality inspection test report of each CRDI injection pump to ensure that each CRDI injection pump delivered meets the engine performance indicators.



BOTEN		测试报告		4.05.2019 10:42:09	
企业名称: _____ 电话: _____ 地址: _____ 传真: _____ 检测人: _____ 客户地址: _____ 电话: _____ 送检单位: _____ 传真: _____ 客户姓名: _____ 检测项目: _____ 检测名称: 检测前 _____ 型号-零件号: _____ 检测地点: _____					
<b>检测结果</b>					
检测日期: 2019-05-04 检测地点: 检测前 检测时间: 检测后 检测人员: 检测后					
ICAR TEST:	38	4	0.5	20.0±1.0	✓
Back:	38	4	15.0	20.0±1.0	✓
WARM:	38	14.5±10.5	0.0	20.0±1.0	✗
Max:	231.5	218.5±14.4	0.0	20.0±1.0	✓
TL:	28.4	24.0±8.5	0.0	20.0±1.0	✓
EL:	14.1	11.0±4.8	0.0	20.0±1.0	✓
VE:	4.7	4.0±1.6	0.0	20.0±1.0	✓
检测前: <input type="checkbox"/> 检测后: <input type="checkbox"/> 检测前: <input type="checkbox"/> 检测后: <input type="checkbox"/> 检测前: <input type="checkbox"/> 检测后: <input type="checkbox"/> 检测前: <input type="checkbox"/> 检测后: <input type="checkbox"/>					

Pic No.2

### 1.9. A2C0003282 CRDI Injection Pump Warranty Instructions

#### (1) Product Warranty Conditions And Instructions

It is necessary to provide pictures, videos, or test reports tested by the CRDI injection pump inspection equipment when the CRDI injection pump is abnormal during use as evidence to feed back to the salesman. Abnormal conditions are properly explained such as: 1.Smoke, 2. Engine shake, 3. Difficulty starting the engine, 4. Engine noise, 5. Oil leakage etc.

#### (2) CRDI Injection Pump Warranty Coverage

- ① After customer receives the A2C0003282 CRDI injection pump within 15 days , if there is a performance failure and the product has no damage on surface, customer can choose to replace it or repair it;
- ② If the A2C0003282 CRDI injection pump has performance problems during the warranty period (6-12 months), and it is confirmed to be product's problems after being tested, you can contact our salesmen to replace the same model or a reworked product with the same performance for free;
- ③ If the CRDI injection pump shell has obvious scratches, it can only be repaired and it will be returned as it is if the product is confirmed to be fault-free.

**⚠ Tips:** For products not covered by warranty, our company can provide paid maintenance services. For products after paid repaired, the same performance problem will have a free warranty period within 3 months from the date of repairing.

#### (3) CRDI Injection Pump Is Not Covered By Warranty

- ① The warranty period has expired.
- ② CRDI injection pump failure caused by high temperature, high pressure, humidity, rain and snow, saline-alkali land, earthquake, and used in abnormal environment.
- ③ Customer disassembles or repairs the CRDI injection pump personally resulting in damage to the CRDI Injection Pump.
- ④ CRDI injection pump damage caused by man-made reasons (throwing, strong magnetic field magnetization, set fire).
- ⑤ CRDI injection pump failure or CRDI injection pump damage caused by non-CRDI injection pump design, technology, manufacturing, quality and other issues.
- ⑥ CRDI injection pump failure due to system pressure exceeding system approved pressure.
- ⑦ CRDI injection pump failure caused by system voltage exceeding approved voltage.
- ⑧ CRDI injection pump failure caused by impurities (water, lead, aluminum powder, iron powder, sulfide) in the system fuel exceeding the standard requirements.
- ⑨ CRDI injection pump failure caused by not installing according to the tightening torque specified in the vehicle engine maintenance manual (the tightening torque is too large or too small).
- ⑩ CRDI injection pump failure caused by not following the installation angle specified in the vehicle engine maintenance manual.
- 11 CRDI injection pump failure caused by not following the cleaning requirements specified in the vehicle engine maintenance manual.
- 12 CRDI injection pump failure caused by failure to replace consumable parts as specified in the vehicle engine maintenance manual.
- 13 CRDI injection pump failure caused by not complying with the intake system fit clearance and exhaust system fit clearance requirements specified in the vehicle engine maintenance manual.
- 14 Failure to replace the consumable parts and the fitting clearance of the oil inlet system pipeline and the CRDI injection pump connection in accordance with the fuel intake system specified in the vehicle engine maintenance manual.

#### 1.10. **A2C0003282** CRDI Injection Pump Manufacturer

**CRDI Injection Pump Manufacturer:** Shenzhen Shumatt Technology Co., Ltd.

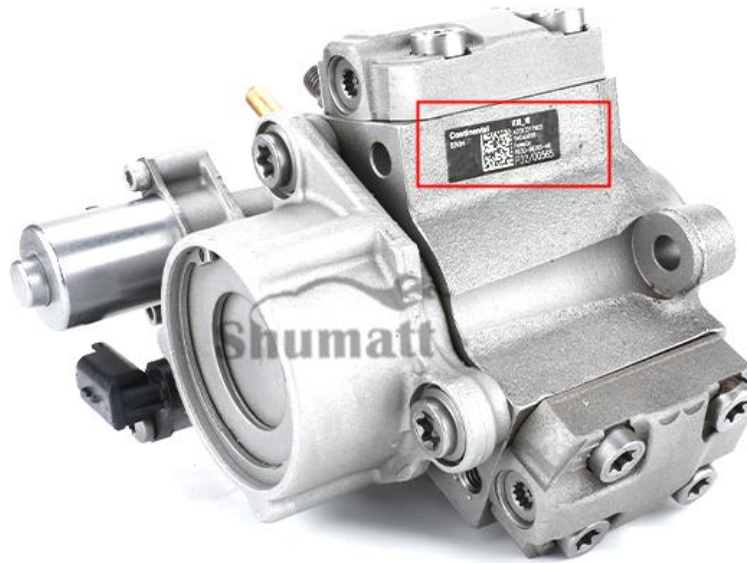
## 2. **A2C0003282** CRDI Injection Pump Technical Support

### 2.1. **A2C0003282** CRDI Injection Pump Utilized Location

(1) **Example:** The code of the CRDI injection pump is shown as follows

NO.	Name
A	Brand, logo, part number





Pic No.3

## 2.2. A2C0003282 CRDI Injection Pump Installation

### (1) A2C0003282 CRDI Injection Pump Installation Precautions:

① The replacement of the CRDI injection pump must strictly follow the electrical system, the approved pressure of the low-pressure fuel intake system, the approved pressure of the high-pressure fuel circuit system, and fuel system replacement consumables requirements (including the low-pressure fuel circuit system filter and the high-pressure fuel circuit) specified in the vehicle engine maintenance manual.

② When install the CRDI injection pump, strictly follow the manual of replacement of wearing parts of the fuel system, cleaning requirements for the connection between the fuel system and the CRDI injection pump, the fitting clearance of the CRDI injection pump connection, the installation angle and tightening torque of the CRDI injection pump, the fitting clearance of the intake system, and the fitting clearance of the exhaust system, so that to ensure the service life of the engine and the normal operation of the CRDI Injection Pump.

③ When installing the CRDI injection pump on the engine, it is necessary to clean the engine block, cylinder head and other parts connected to the CRDI injection pump, and ensure that there is no dust, carbon deposits, water, rust spots, etc.

④ If don't replace new washer shim, it can lead to: deformation of CRDI injection pump, oil leakage and air leakage, which will cause serious damage to the CRDI injection pump and CRDI injection pump to break and cause damage to the engine.

⑤ When installing the CRDI injection pump on the engine, please carefully check the components related to the installation of the CRDI injection pump are not deformed, such as the CRDI injection pump pressure plate, screw, CRDI injection pump rod and other accessories, and install it in strict accordance with the operation steps of the engine maintenance manual.

⑥ It is forbidden to operate the bare CRDI injection pump for a long time in an environment with serious dust pollution and corrosion to iron products.

⑦ It is forbidden to operate the bare CRDI injection pump for a long time in a strong magnetic field

environment.

### 2.3. Reasons of **A2C0003282** CRDI Injection Pump Not Working Normally

- (1) There is air in the oil circuit of the engine fuel system.
- (2) Vehicle CRDI injection pump oil supply system is not normal.
- (3) Engine common rail system oil leakage or pressure limiting valve damage.
- (4) There is a short circuit, cutting out and poor contact in the wiring harness connected to the CRDI injection pump of the vehicle.
- (5) The long-term placement of the CRDI injection pump causes the anti-rust oil to solidify, and the internal components are stuck or the oil holes are blocked.

**⚠ Before installing, carefully check whether other components in the common rail system are damaged so as to prevent the CRDI injection pump from not working properly after being replaced.**

### 2.4. Causes of **A2C0003282** CRDI Injection Pump Being Damaged

- (1) Failure to follow the engine maintenance manual during disassembly or installation may result in damage to the CRDI injection pump.
- (2) The fuel oil used for the vehicle does not meet the standard cause damage to the CRDI injection pump, such as: the water content in the fuel oil exceeds the standard, iron powder, aluminum powder, sulfide impurities exceed the standard, etc.
- (3) The engine is not regularly maintained according to the engine maintenance manual (please refer to the vehicle maintenance manual for the maintenance mileage). For example, failure to replace the lubricating oil of the engine system for a long time will cause abnormal wear of the engine, excessive exhaust gas volume or a large amount of carbon deposits inside the engine. The filter is not replaced during maintenance or the replaced filter cannot reach the original filter standard. all above reasons can cause damage to the CRDI injection pump.
- (4) The abrasion of the oil pump produces iron powder and aluminum powder enter the CRDI injection pump and cause damage to the CRDI injection pump.
- (5) The deformation and abrasion of fuel tank result in iron powder or aluminum powder entering the CRDI injection pump and causing damage to it.
- (6) The CRDI injection pump is damaged due to replacement or adjustment of the relevant parts of the CRDI injection pump. For example, the valve clearance does not meet the standard after the engine is repaired, the replacement or modification of the wiring harness connected to the CRDI injection pump fails to meet the original standard.
- (7) The engine is overheated and overloaded for a long time working results in damage to the CRDI injection pump.
- (8) The CRDI injection pump will be damaged naturally at the end of its working life.
- (9) The CRDI injection pump is magnetized (CRDI injection pump parts' magnetic exceeded) causing the CRDI injection pump to not work properly.

**⚠ Before replacing the CRDI injection pump, please check the engine parts carefully according to the engine maintenance manual to avoid the CRDI injection pump being damaged again after replacement.**

## 2.5. A2C0003282 CRDI Injection Pump Storage Standards

### (1) Choose a suitable storage place

The warehouse and cargo yard where the CRDI injection pumps are stored should be kept clean and dry, and away from the factory buildings that generate harmful gases and dust; do not mix with acid, alkali, salt and other substances; the storage place should have a good drainage system; the cargo yard should be flattened with gravel or furnace ash etc. to enhance the water permeability of the surface layer to keep the reservoir area dry.

### (2) Strict storage requirements

Strict inspections should be carried out when the CRDI injection pumps are put into storage, the surface cleaning work should be done well to remove water traces, oil stains, ash and other dirt, remove the rust and do anti-rust treatment in time. Packaged CRDI injection pumps must be protected from damage.

### (3) Keep the warehouse dry and do moisture-proof work

The relative humidity is usually below 70% for the CRDI injection pumps placed in the room, and the corrosion of the CRDI injection pumps is significantly reduced.

CRDI injection pumps must be stored in the warehouse, and they are forbidden to store in the same warehouse with commodities with high water content.

### (4) Reasonable stacking

After the CRDI injection pump is exposed to rain, the corrosion rate will increase significantly. The purpose of sealing is to isolate the CRDI injection pump from rainwater and humid air, so the warehouse window should be checked in time to avoid rainwater entering the warehouse.

If the CRDI injection pump package is damaged, it should be repaired or replaced; when the package is damp, the packaging material should be dried; if the original anti-corrosion and oil applied at the factory is found to be damaged or dried up, it should be cleaned and re-applied oil in time.

⚠ It is forbidden to leave the CRDI injection pump exposed in the air for a long time.

⚠ It is forbidden to store acid, alkali, salt and other substances together with the CRDI injection pump.

⚠ The unpacked CRDI injection pump must be rust-proof during secondary storage.

## 2.6. A2C0003282 CRDI Injection Pump Technical Support Obtaining Methods

(1) CRDI injection pump technical data: visit <http://shumatt.com> to get the technical data.

(2) CRDI injection pump technical videos:

**Facebook:** Visit <https://www.facebook.com/hison.li> to get the technical videos, constantly follow can get more information.

**YouTube:** [https://www.youtube.com/channel/UCByvYBx7VjV\\_mAfxh\\_Hu-aw](https://www.youtube.com/channel/UCByvYBx7VjV_mAfxh_Hu-aw) to get the technical videos, constantly follow can get more information.

**Shumatt:** Visit <http://shumatt.com> to obtain the technical videos.

(3) CRDI Injection Pump Information query software

TruckBook Parts EPC APP, download and install on Android/Apple App Store, visit <http://shumatt.com> to get the download and installation tutorial

(4) Search the CRDI injection pump test data through TruckBook Parts EPC APP.

### 3. [A2C0003282](#) CRDI Injection Pump Purchase And Delivery

#### 3.1. [A2C0003282](#) CRDI Injection Pump Purchase And Payment Term

**Payment Method:** T/T, Paypal, Alipay, WeChat

**⚠ Please contact our salesmen for specific payment information.**

#### 3.2. [A2C0003282](#) CRDI Injection Pump Main Sales Markets

**Main Sales Markets Of CRDI Injection Pump:** Asia, Europe, North America, South America, Africa etc.

#### 3.3. [A2C0003282](#) CRDI Injection Pump Declaration Requirements

Shumatt can assist customers to provide the following documents for import customs clearance: contract, invoice, packing list, bill of lading, insurance policy, certificate of origin, etc.

#### 3.4. [A2C0003282](#) CRDI Injection Pump Shipping Ways

**Destination in China areas:** SF Express, Debon Express, the corresponding logistics company can be provided according to customer requirements in special cases.

**Destinations out of China's areas:** DHL, UPS, FedEx, TNT air, ocean or other shipping methods required by customers.

#### 3.5. [A2C0003282](#) CRDI Injection Pump Delivery Time

**Delivery Time:** Send out within 3 – 7 working days after receiving payment (Except for special products and special cases).

#### 3.6. [A2C0003282](#) CRDI Injection Pump Logistics Time for Destination Out of China's Areas

**DHL Logistics Time:**

Place Of Departure	Hong Kong	Other Countries Or Regions In Asia	Australia and New Zealand	Europe	America	Other Countries
China Mainland	7 Days	7 Days	8 Days	8 Days	8-12 Days	7-10 Days

**UPS Logistics Timeliness: Country or region of origin: Mainland China**

Country of Destination	Estimated Arrival Time	Country of Destination	Estimated Arrival Time	Country of Destination	Estimated Arrival Time
Japan	3 Days	Britain	5-7 Days	Egypt	5-7 Days
Turkey	5-7 Days	Singapore	3 Days	Switzerland	5-7 Days
Bahrain	5-7 Days	Latvia	7-10 Days	New Zealand	7-10 Days

<b>Sri Lanka</b>	5-7 Days	Thailand	3 Days	Austria	5-7 Days
<b>Romania</b>	5-7 Days	Vietnam	3-5 Days	Estonia	5-7 Days
<b>Malaysia</b>	3-5 Days	Israel	5-7 Days	Mexico	7-10 Days
<b>France</b>	5-7 Days	USA	5-7 Days	United Arab Emirates	5-7 Days
<b>Italy</b>	5-7 Days	Netherlands	5-7 Days	Bengal	7-10 Days
<b>Lebanon</b>	5-7 Days	Philippines	3-5 Days	Greece	7-10 Days
<b>South Korea</b>	3 Days	Spain	5-7 Days	Myanmar	5-7 Days
<b>Canada</b>	5-7 Days	Germany	5-7 Days	Saudi Arabia	7-10 Days
<b>Portugal</b>	5-7 Days	Australia	5-7 Days	South Africa	7-10 Days
<b>Denmark</b>	5-7 Days	Belgium	5-7 Days	Ukraine	7-10 Days
<b>India</b>	7-10 Days	Qatar	7-10 Days	Poland	5-7 Days
<b>Indonesia</b>	3-5 Days	Morocco	7-10 Days	Pakistan	7-10 Days
<b>Kuwait</b>	7-10 Days	/	/	/	/

▲ The logistics time is for reference only and is subject to the actual arrival.

### 3.7. A2C0003282 CRDI Injection Pump Shipping Package

**Domestic express packaging:** Usually wrapped in waterproof scotch tape, such as picture No.1.

**International express packaging:** Wrapped with waterproof yellow tape after wrapping the black protective film, such as picture No. 2.

**Pallet Shipping:** Use fumigation free and recycling trays that meet export requirements, and use white wrapping protective film to wrap and bind with cable ties for the outside, such as picture No. 3, also, the products can be packaged according to customers' requirements.

▲ The packing tray is made of plastic and can be recycled.

▲ Transparent tape, yellow tape, black wrapping protective film, white wrapping protective film are non-degradable materials, please dispose of them properly.

▲ Minors are prohibited from using transparent tape, yellow tape, black wrapping protective film, and white wrapping protective film to avoid personal injury.



Pic No. 1

**Domestic express packaging:**  
Wrapped with Transparent tape



Pic No. 2

**International express packaging:**  
Wrapped with yellow tape after wrapping

black protective film



Pic No. 3

**Pallet Shipping:** Use pallet that meet export requirements, and use white wrapping protective film to wrap and bind with cable ties

#### 4. Company Information



Pic No.4

##### 4.1. Company Introduction

**Chinese company name:** 深圳市舒马特科技有限公司

**English company name:** Shenzhen Shumatt Technology Co., Ltd.

📱 **Mobile Phone/WeChat:** +86-13410541523

📱 **Hong Kong Mobile Phone:** +852-67653519

☎ **Tel:** +86-755-23215133



📍 **Shenzhen Office:** 11-12, Floor 14, Building 13, Qinchengda Building, Exit A, Honglang North Subway Station, Bao'an District, Shenzhen, China Mainland

📍 **Shenzhen Office:** Exit C, Qiao Touxu Metro Station, No. 66 Chongqing Road, Fuhai Avenue, Bao'an District, Shenzhen, China Mainland

📍 **Hong Kong Office:** Jianfa Street Industrial Zone, Tuen Mun, New Territories, Hong Kong, China

📍 **After-Sales Service Address:** Please contact our salesmen to obtain and provide the corresponding product maintenance reasons (Reference: [1.9. A2C0003282 CRDI Injection Pump Warranty Instructions](#) )

#### 4.2. Contact Information

Name	WeChat/ WhatsApp
Ruby	+86-13410541523

#### 5. Copyright Statement

The content of this file "*A2C0003282 CRDI Injection Pump CR Series Technical File*" is owned by Shenzhen Shumatt Technology Co., Ltd. and is protected by copyright law and international treaties. No part of the content in "*A2C0003282 CRDI Injection Pump CR Series Technical File*" may be reproduced, distributed, or transmitted in any form or by any means, including photocopying, recording, or other electronic or mechanical methods, without the prior written permission of the copyright owner.